

Compact Solutions: New X Range CSR models with Current relay and NTC

Huayi Compressor Barcelona has already successfully introduced the innovative CSR+NTC electrical version in the X range for LBP and HMBP applications.

See below the list of models already available with this solution.

LBP models

| REFRIGERANT | MODEL | DISPLACEMENT cm ³ | VOLTAGE FREQUENCY | MOTOR | Compressor Performance ASRHAЕ conditions | |
|-------------|---------|---------------------------------|--------------------------|-------|---|------|
| | | | | | -23,3° C | |
| | | | | | kcal/h | W/W |
| R404A | MX18FBa | 18.40 | 220-240V 50Hz | CSR | 700 | 1.36 |
| R404A | MX21FBa | 20.72 | 220-240V 50Hz | CSR | 805 | 1.35 |
| R404A | MX21FGa | 20.72 | 200-220/220-230V 50/60Hz | CSR | 805 | 1.35 |
| R404A | MX23FBa | 23.20 | 220-240V 50Hz | CSR | 915 | 1.35 |
| R404A | MX23FGa | 23.20 | 200-220/220-230V 50/60Hz | CSR | 915 | 1.34 |
| R290 | NX18FBa | 18.40 | 220-240V 50Hz | CSR | 705 | 1.44 |
| R290 | NX21FBa | 20.72 | 220-240V 50Hz | CSR | 780 | 1.44 |
| R290 | NX23FBa | 23.20 | 220-240V 50Hz | CSR | 862 | 1.41 |

LBP models

| REFRIGERANT | MODEL | DISPLACEMENT cm ³ | VOLTAGE FREQUENCY | MOTOR | Compressor Performance ASRHAЕ conditions | |
|-------------|---------|---------------------------------|--------------------------|-------|---|------|
| | | | | | 7,2° C | |
| | | | | | kcal/h | W/W |
| R404A | MX16TBa | 16.03 | 220-240V 50Hz ~1 | CSR | 2030 | 2.15 |
| R404A | MX18TBa | 18.40 | 220-240V 50Hz ~1 | CSR | 2330 | 2.18 |
| R404A | MX18TGa | 18.40 | 200-220/220-230V 50/60Hz | CSR | 2330 | 2.18 |
| R404A | MX21TBa | 20.72 | 220-240V 50Hz ~1 | CSR | 2620 | 2.15 |
| R404A | MX21TGa | 20.72 | 200-220/220-230V 50/60Hz | CSR | 2620 | 2.15 |
| R290 | NX18TB | 18.40 | 220-240V 50Hz ~1 | CSR | 2102 | 2.61 |
| R290 | NX21TBa | 20.72 | 220-240V 50Hz ~1 | CSR | 2334 | 2.55 |

Bifrequency models values at 50Hz

As mentioned in previous communications, the basis for the innovation is the use of a standard current relay provided with a NTC resistance which allows replacing the conventional potential relay, which usually has to be located in an external and bulky remote electrical box.



cubigel[®]
compressors
by
HUAYI
COMPRESSOR
BARCELONA

Live the **cooling** experience

The main purpose of the fixed NTC in a standard current relay is to reduce voltage peaks in the relay contacts. It allows not needing the bulky external connecting box, which creates a voltage relay. Therefore, it makes the product more competitive in terms of costs and better in terms of space requirements (see Fig. 1 and 2).

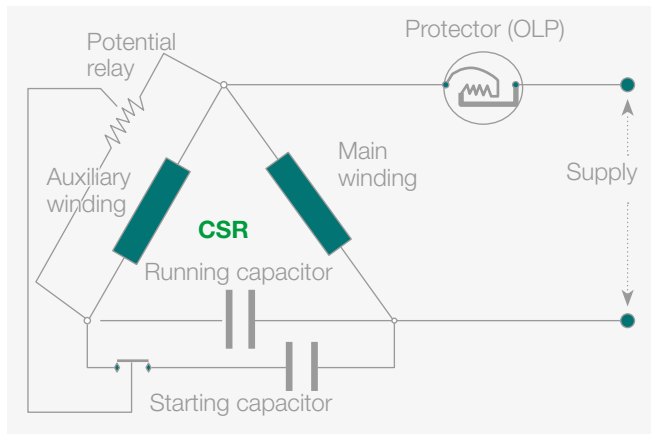


Fig. 1. CSR with Potential relay

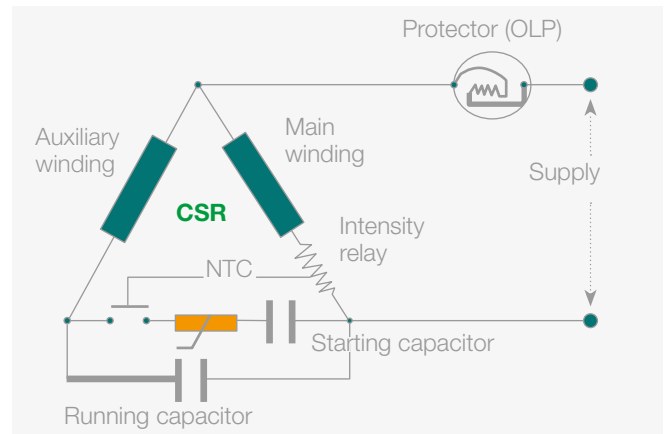


Fig. 2. CSR+NTC solution

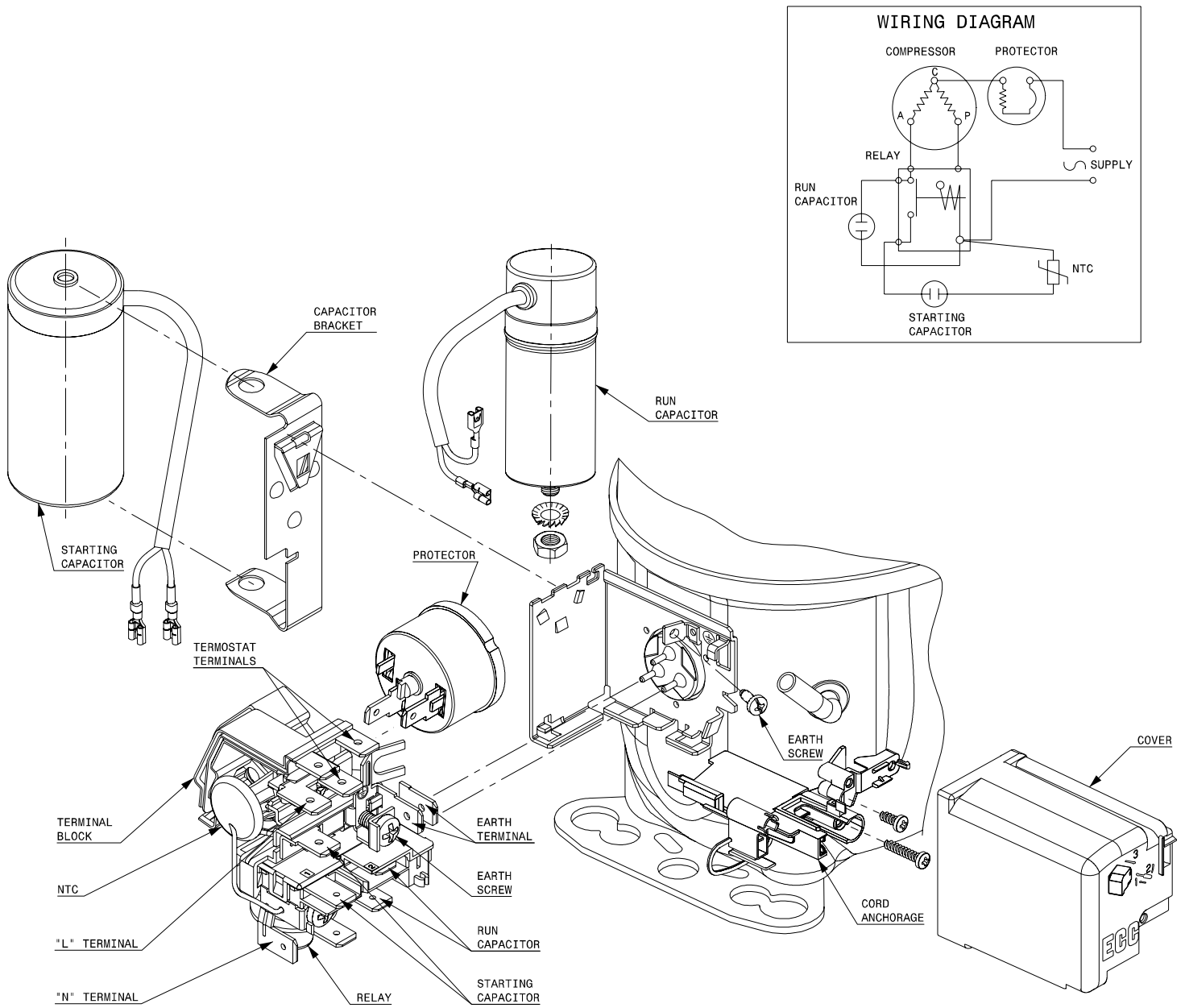
In the following drawing **FTE-2148B.2** and **FTE-2152B.3** you will find the main differences between both compressor versions.

Please do not hesitate to contact us about any doubt or any further explanation you might need in regards to this subject.



Live the cooling experience

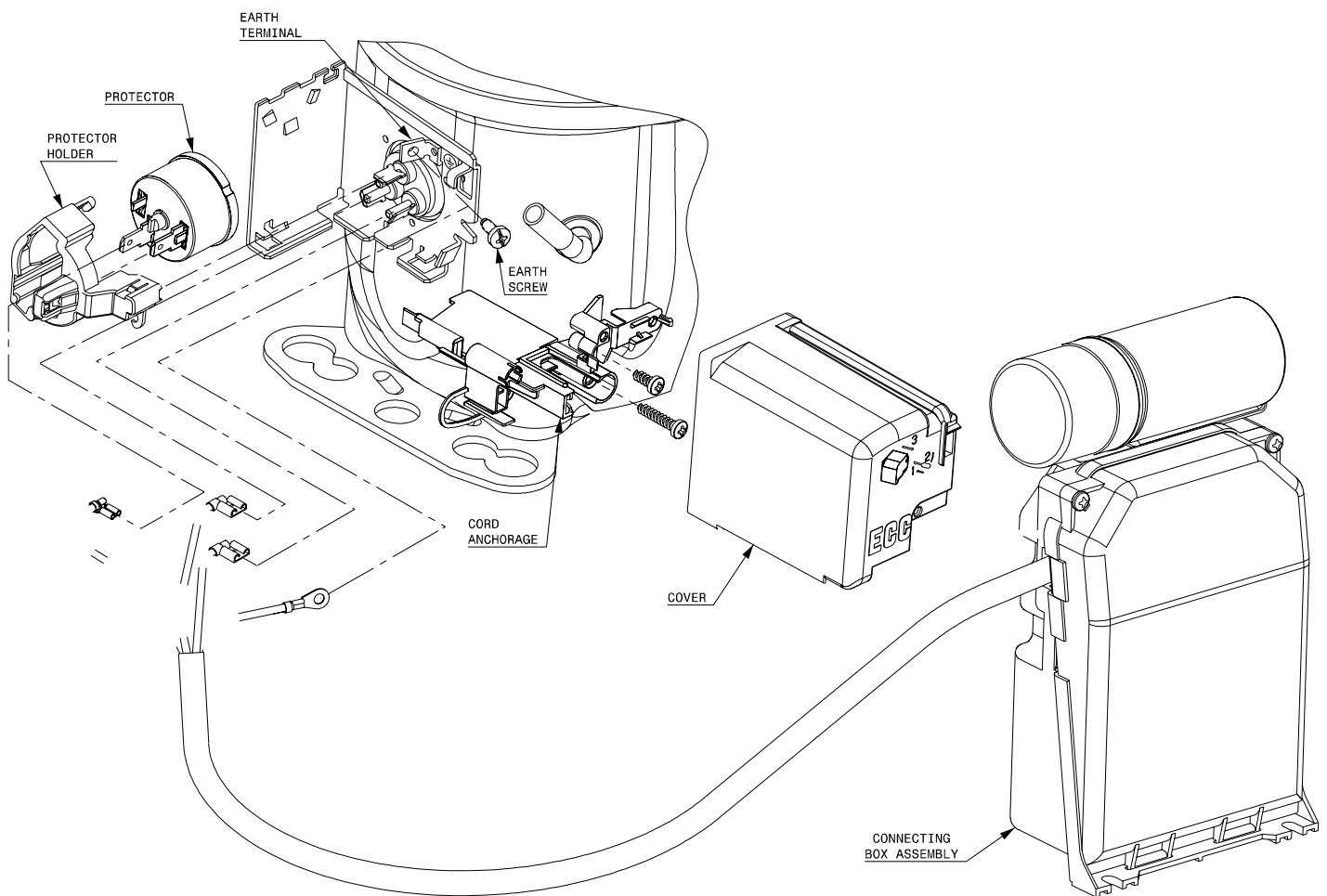
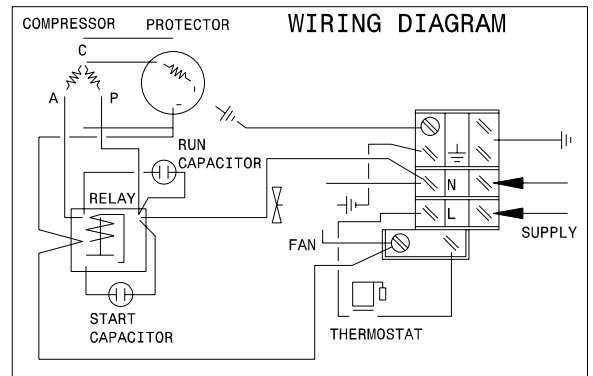
CSR CONNECTION (CURRENT RELAY + NTC)



cubigel[®]
compressors
by
HUAYI
COMPRESSOR
BARCELONA

Live the **cooling** experience

CSR CONNECTION (EXTERNAL CONNECTING BOX) (P, X ranges)



cubigel[®]
compressors
by
HUAYI COMPRESSOR BARCELONA

Live the **cooling** experience